



Lot 292 - City View 264

This house and land package includes:

- › Ducted A/C
- › Driveway
- › Letter box and Clothesline
- › Floor coverings
- › Concrete and tiles to Alfresco
- › M class slab with some piercing
- › Extra electrical allowance (lights and fans)
- › All European appliances with 900mm cooktop & dishwasher
- › Stones to Kitchen, Bathroom & Ensuite

 4  2.5  2

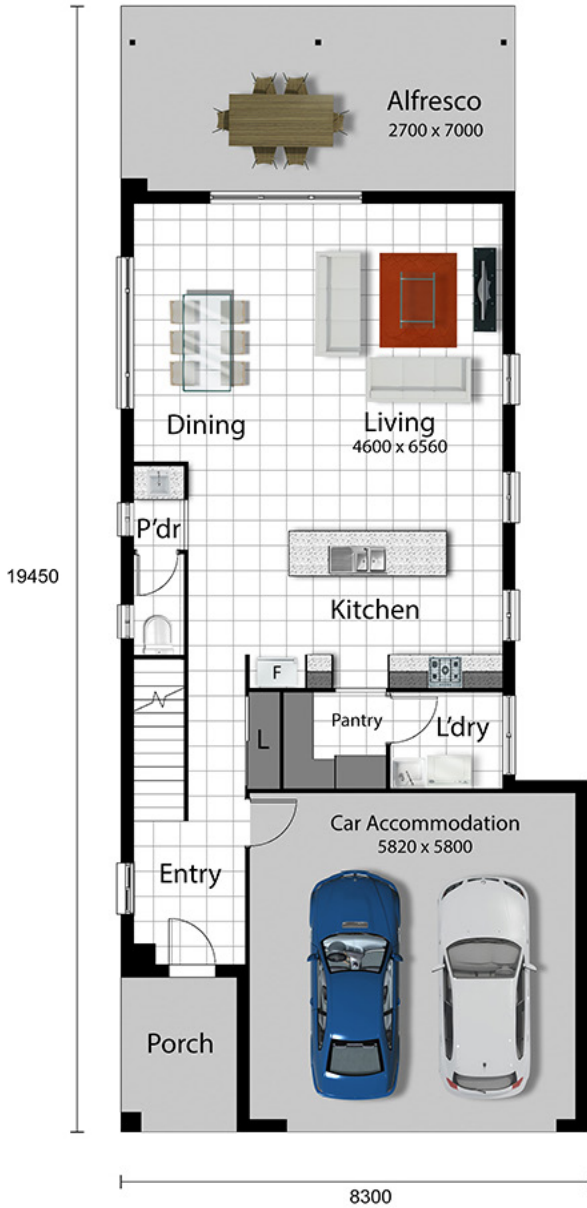
\$726,900

Land 448m² | House 266m² | Frontage 14m

Contact David Aird

0417 649 873

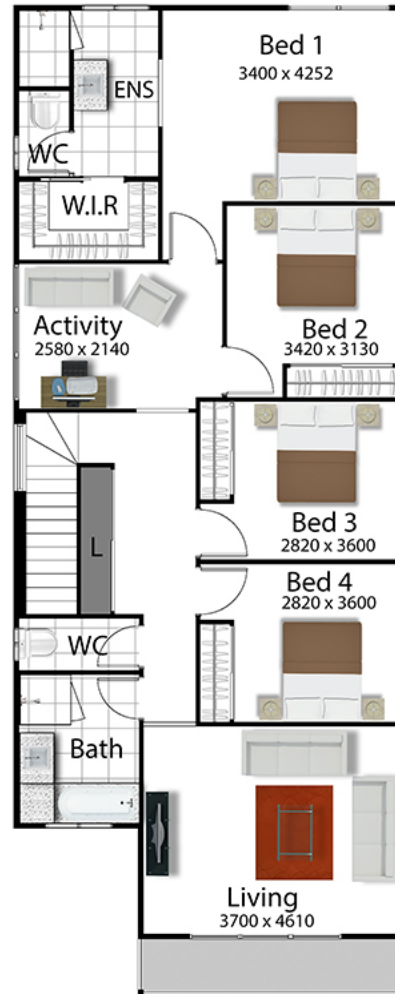
david.aird@freshhomes.com.au



AREA SCHEDULE

All areas are rounded down to one decimal point

Ground Floor (excluding car accom.)	81.9 m ²
First Floor	111.9 m ²
Total (Living Area)	193.8 m²
Garage	37.9 m ²
Porch	5.7 m ²
Balcony	4.7 m ²
Alfresco	24.2 m ²
Total (Under Roof)	266.3 m²



Plans and images are for illustration only. Floor plan and elevation as shown in this brochure are artists impressions only and do not form any part of the contract to build. Standard plans and specifications take precedence over any design, elevation or brochure. These designs are exclusively the property of Fresh Homes and as such are copyright. QBCC No 1088603. Prices may change without notice. *Applies to building structure only