



Lot 351 - WRI 243 D RB

This house and land package includes:

- › Full Turnkey
- › All Site Costs
- › Bonus offer: 5.4kW Solar PV + Battery Ready
- › 1200mm wide hinged Front Entrance door with Gainsborough Trilock
- › Quality steel wall framing and steel roof trusses & Colorbond Steel Roof
- › Caesarstone Kitchen Benchtop
- › Window Coverings to windows & sliding doors (Blockout Roller Blinds from builders range)
- › NBN2 Enclosure Package
- › Exposed Aggregate Driveway/Path/Porch

 4  2.5  2

\$671,960

Land 312m² | House 242m²

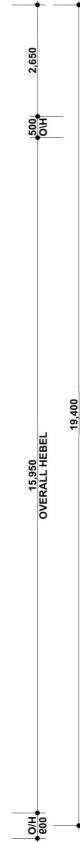
Contact Michael Dahm

0432 271 640

m.dahm@stylemasterhomes.com.au



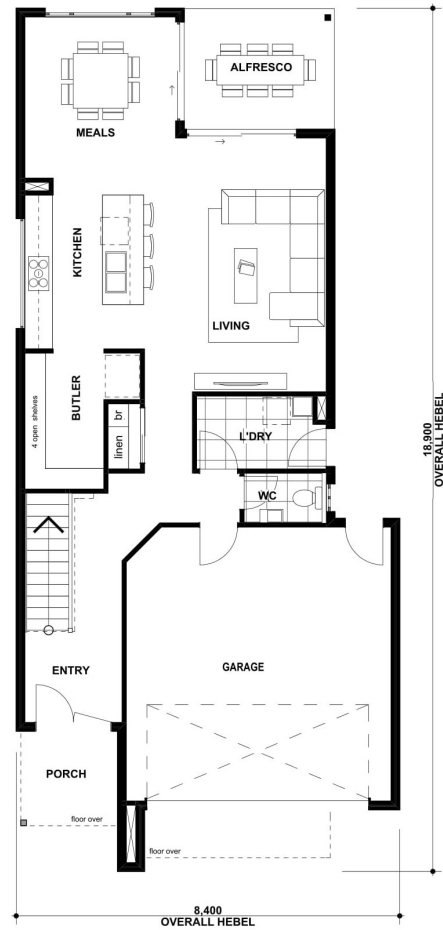
First floor



AREA SCHEDULE

All areas are rounded down to one decimal point

Ground Floor (excluding car accom.)	82.8 m ²
First Floor	109.3 m ²
Total (Living Area)	192.1 m²
Garage	37.0 m ²
Porch	4.4 m ²
Alfresco	8.8 m ²
Total (Under Roof)	242.3 m²



Ground floor

Disclaimer: Price is correct as at date of publication and is subject to change without notice or obligation. Package may be subject to developer's design review panel, council final approval and Stylemater processes. Plans and images are for illustration only. Floor plan and elevation as shown in imagery are renders only and may not depict final outcomes. Land is not supplied by Stylemaster and developer terms and conditions may apply. Photographs may depict items which are not supplied by Stylemaster. The design and illustrations remain the property of Stylemaster and as such are copyright. QBCC License 1025309