



Lot 468 - Casuarina 209 Resort

This house and land package includes:

- › 2.7m Ceilings with 2.4m Hume Accent range doors
- › Kitchen appliances include a 90cm Omega freestanding dual cooker and dishwasher
- › Caesarstone benchtops
- › Daikin 12.5Kw ducted air conditioning with 4 zones and a My Air 5 controller
- › Beaumont tiles to the porch and living areas
- › Carpet to the bedrooms and Lounge room
- › Exposed aggregate driveway with kerb cut
- › 6.6Kw Bradford Energy solar system

 4  2  2

\$700,000

Frontage 14m | Land 443m² | House 208m²

Contact Ben Puchala

0466 318 414

ben.puchala@gjgardner.com.au

AREA SCHEDULE

All areas are rounded down to one decimal point

Ground Floor (excluding car accom.) 153.4 m²

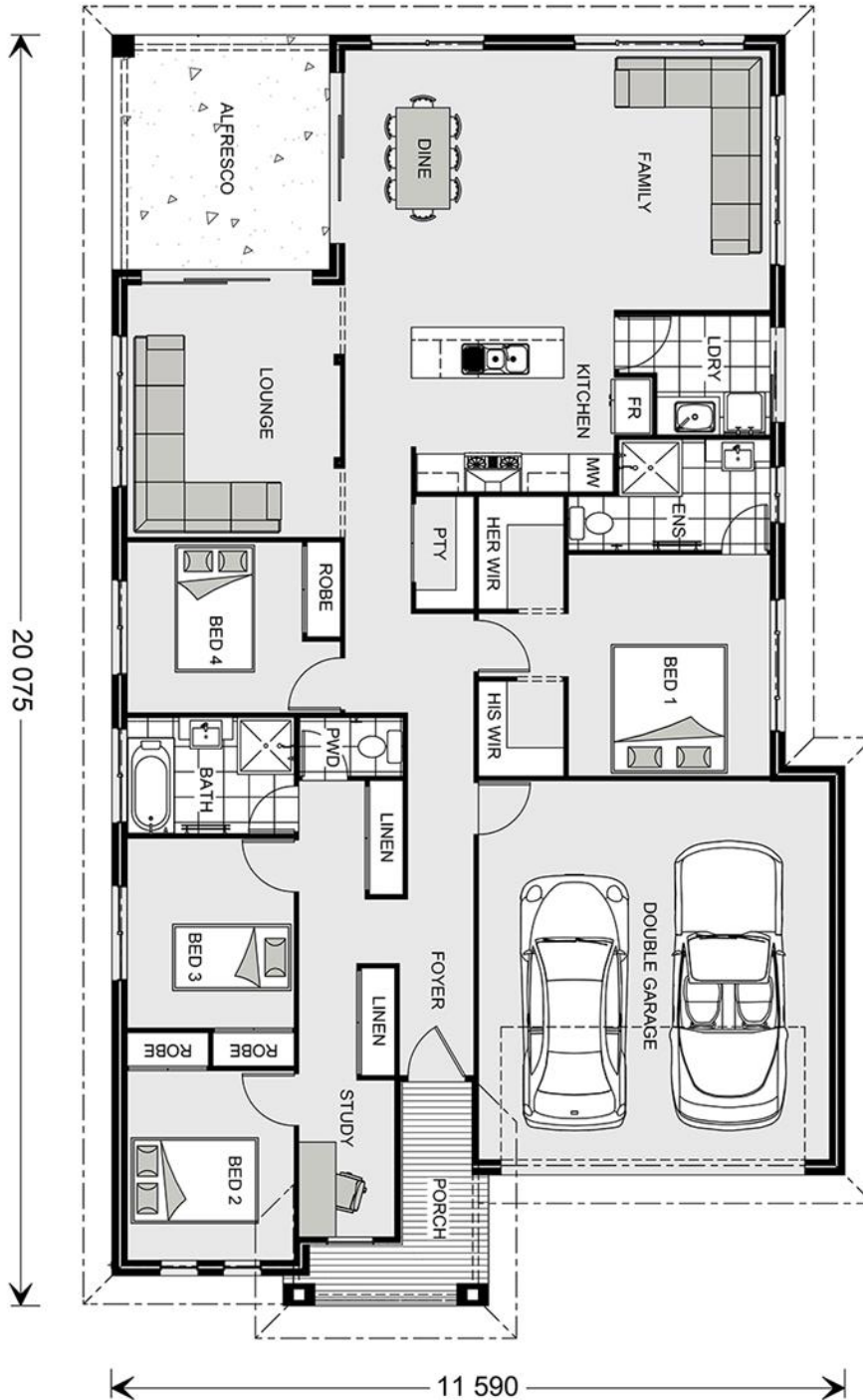
Total (Living Area) 153.4 m²

Garage 36.5 m²

Porch 6.0 m²

Alfresco 12.8 m²

Total (Under Roof) 208.7 m²



Disclaimer: This Document has been prepared without all the Relevant Documentation being available at this time and is "Subject to Change" upon the receipt of the documents should the information provided prove different to the Items included herein, being but not limited to Soil Test, Contour Survey and Engineer's Details. (Exact Soil Classification, Slab Design, Additional Site Works and Bored Pier Requirements cannot be accurately determined without these documents being available)