



Lot 469 - Seaview 276 SL Urban

This house and land package includes:

- › Entertainers kitchen with Caesarstone benchtops, Omega 90cm freestanding gas cooker
- › 15.5Kw Daikin ducted air conditioner with four zones and My Air 5 controller
- › 2.7m ceilings on lower levels and 2.55m ceilings to the top floor
- › Gold range tiles from Beaumont to living areas and builder's gold range carpet to the bedrooms
- › 6.6Kw Bradford Energy solar system
- › 2.4m Hume Accent range internal doors
- › Exposed aggregate driveway with kerb cut

4 3 2

\$859,000

Frontage 17.9m | Land 451m² | House 276m²

Contact Ben Puchala

0466 318 414

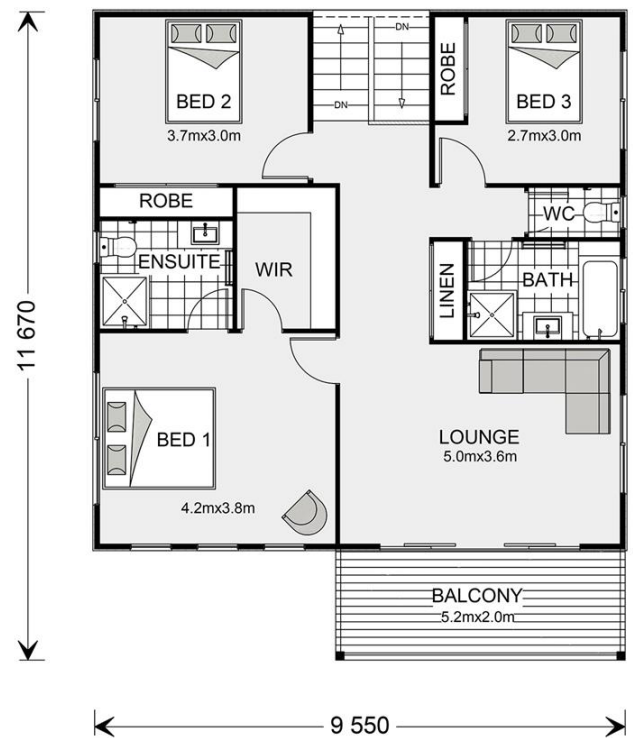
ben.puchala@gjgardner.com.au



AREA SCHEDULE

All areas are rounded down to one decimal point

Ground Floor (excluding car accom.)	118.4 m ²
First Floor	88.3 m ²
Total (Living Area)	206.7 m²
Garage	37.5 m ²
Porch	4.7 m ²
Alfresco	12.8 m ²
Void	4.1 m ²
Balcony	10.4 m ²
Total (Under Roof)	276.2 m²



Disclaimer: This Document has been prepared without all the Relevant Documentation being available at this time and is "Subject to Change" upon the receipt of the documents should the information provided prove different to the Items included herein, being but not limited to Soil Test, Contour Survey and Engineer's Details. (Exact Soil Classification, Slab Design, Additional Site Works and Bored Pier Requirements cannot be accurately determined without these documents being available).