



Lot 483 - Hoffman 28 Walker

This house and land package includes:

- › Fixed price site costs
- › Stainless steel kitchen appliances
- › Floor coverings to entire home
- › Spacious open plan living with alfresco
- › Exposed aggregate driveway and portico
- › Colorbond roof
- › NBN ready
- › 6 star energy rating compliance

 4  2  2

\$772,900

Land 349m² : House 258.91m²

Contact Shaun Parsons

0478 806 864

shaun.parsons@porterdavis.com.au

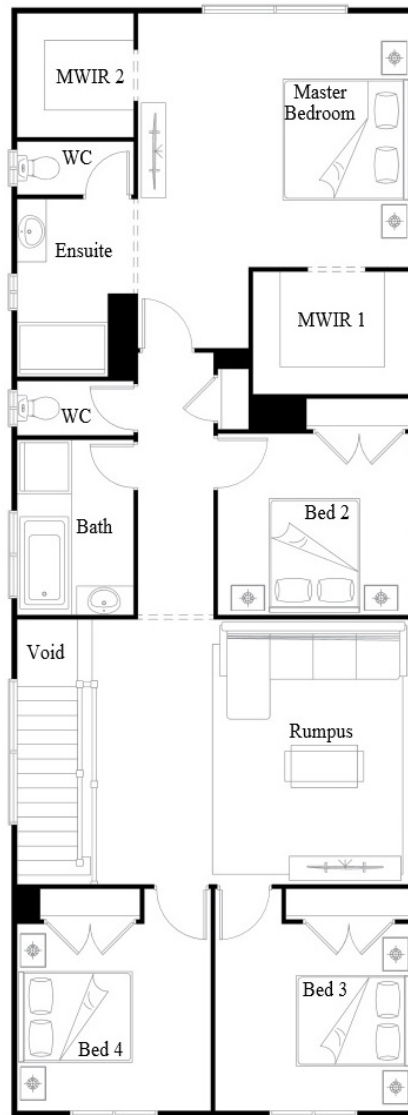
AREA SCHEDULE

All areas are rounded down to one decimal point

Ground Floor (excluding car accom.)	77.0 m ²
First Floor	122.81 m ²
Total (Living Area)	199.81 m²
Garage	37.6 m ²
Portico	4.0 m ²
Alfresco	17.5 m ²
Total (Under Roof)	258.91 m²



GROUND FLOOR



FIRST FLOOR

Disclaimer: Images for illustration purposes only and include examples of upgrade options. Package prices are based on standard house plan, included facade and builder's preferred siting. Pricing may vary due to land availability. Porter Davis reserves the right to change or withdraw at any time. T&C's apply see website for more detail porterDavis.com.au. QLD Pty Ltd QBCC Lic. No. 15007714 | 5235. E32131